

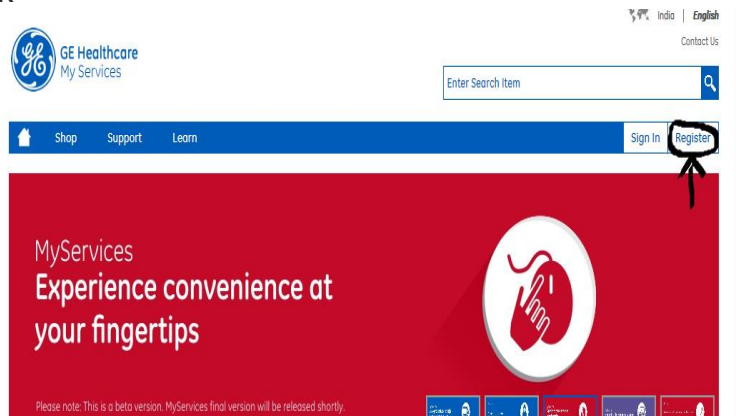


Registration

- [How do I login to the website?](#)
 - [I forgot my password. How do I reset it?](#)
-

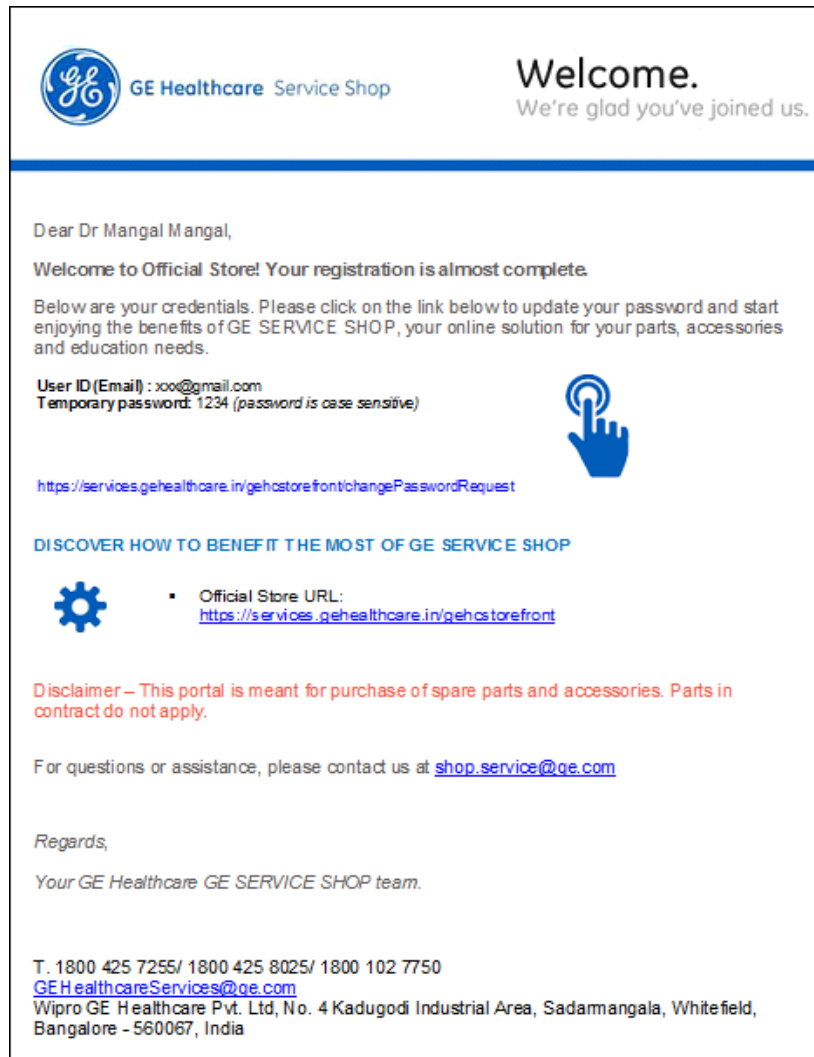
- **How do I login to the website?**

Login to our website <https://services.gehealthcare.in/gehcstorefront/>
Click on Register Link



Once Registration is completed, you'll receive a confirmation mail from us, within a span of 48hours after your account validation is done.

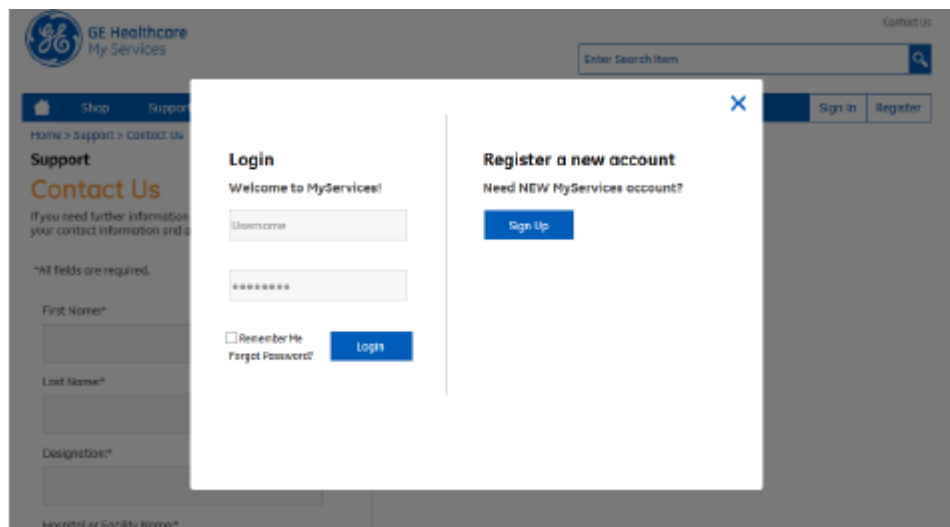
You'll receive a mail with your Login ID and Password in the following format. Please save this login Id and password and use it to 'Sign In' at Service Shop.



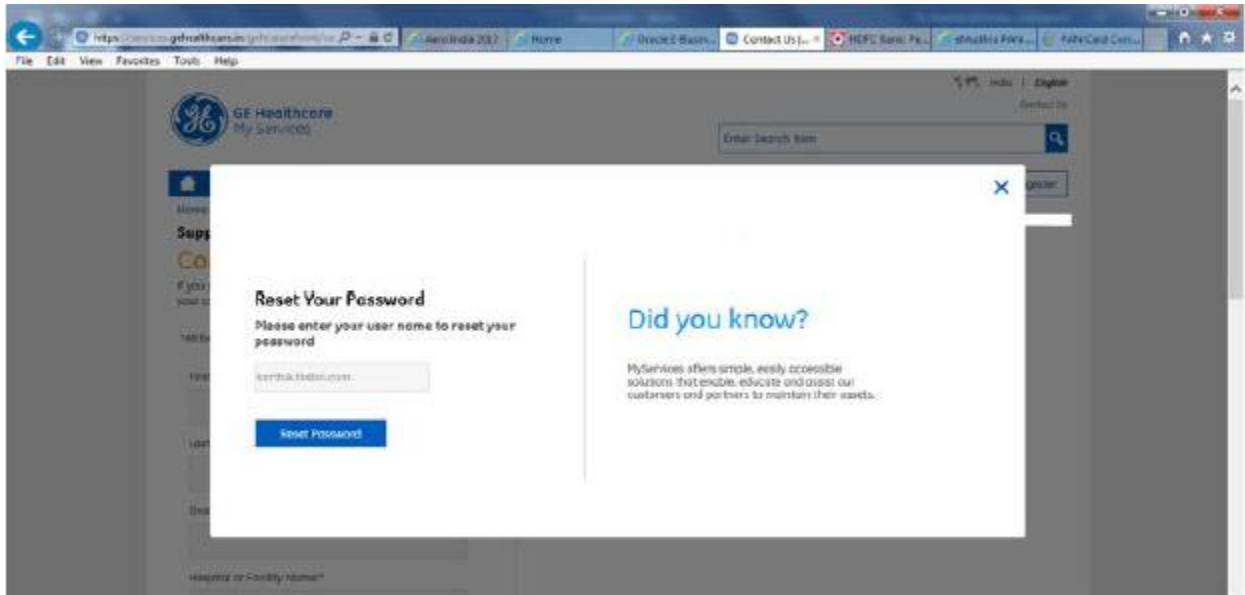
- I forgot my password. How do I reset it?

Process 1:

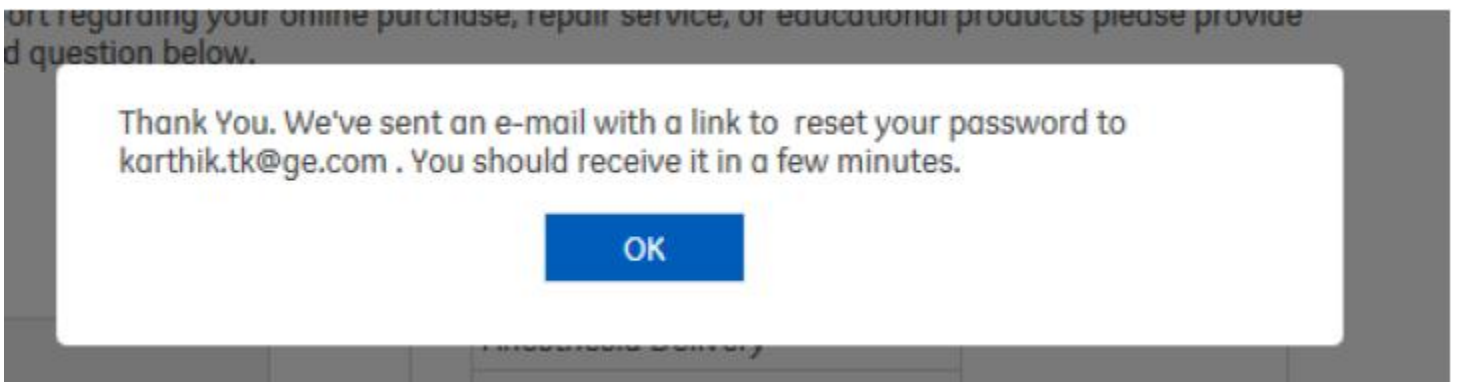
At the time of login if user forgets password, user must click on Forget Password?



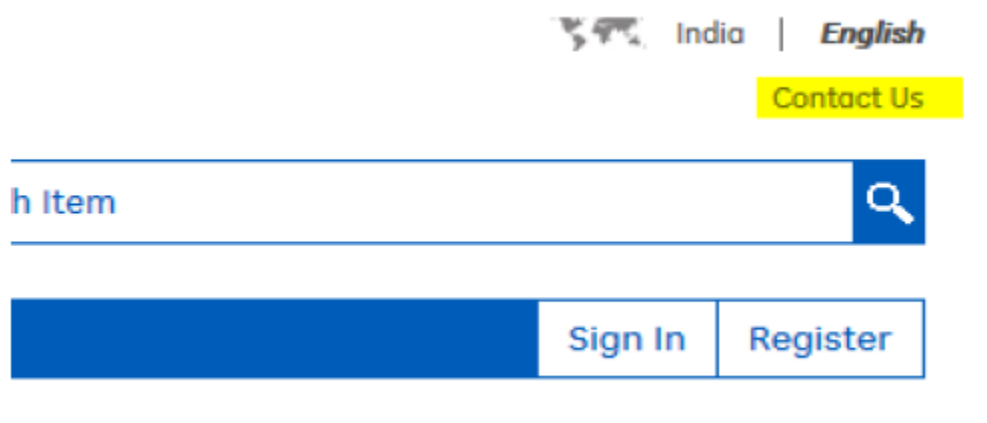
Below popup screen will appear where user must enter his login id and click Reset Password



Confirmation Message will appear and a temporary password mail will be triggered to user Id.




Process 2: Click on Contact Us




In Contact Us form, user must select **Account Locked/Disabled** in **Request category** drop down where request details will come automatically. Next click on **Submit** where automatic mail will be triggered to user with temporary password.


Country:*

India 

State:*

-Select State- 

Request Category:*

Account Locked/Disabled 

Question/Request Details:*

My Account was locked/Disabled. Please reset my password. 


Submit